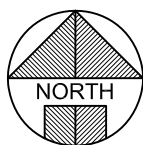




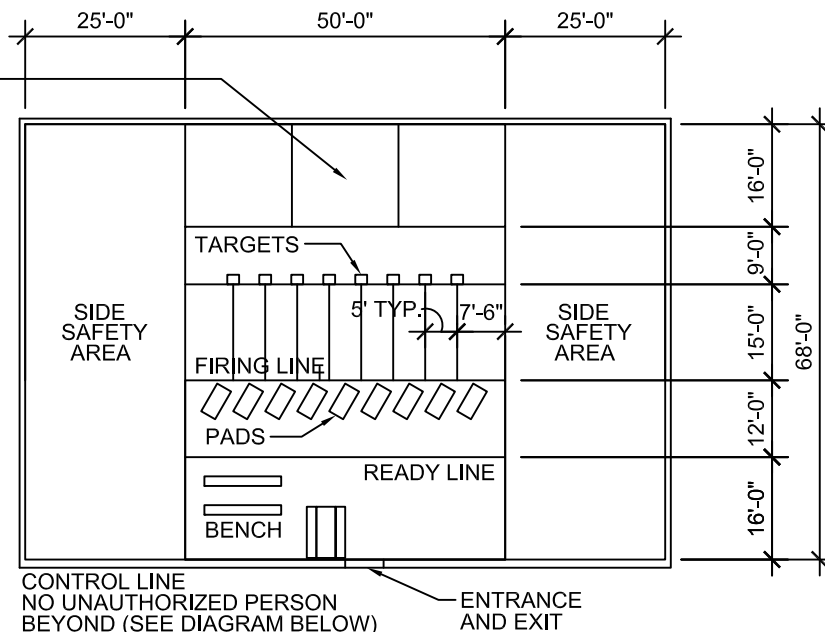
# CUB SCOUT BB RANGE:

DESIGN REFERENCE FOR A CUB SCOUT BB RIFLE RANGE LAYOUT.

SECONDARY BACKSTOP  
PATROL FLY OPTION  
ILLUSTRATED 3 FLIES  
REQ'D. (BSA SUPPLY NO.  
UD2282 OR UD222828  
HEAVY DUTY)



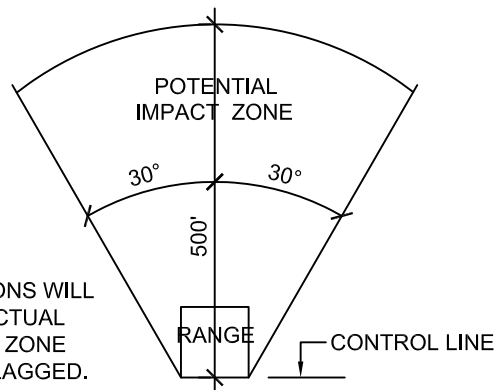
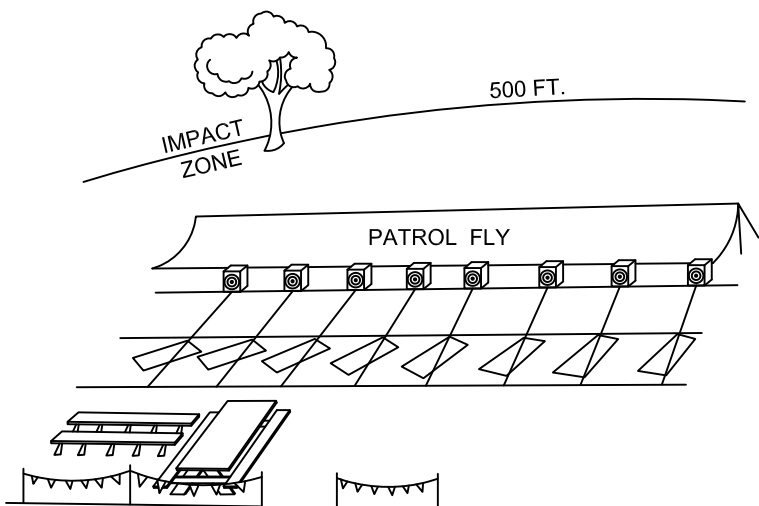
NORTHERLY  
ORIENTATION  
WILL MINIMIZE  
ADVERSE  
SUNLIGHT  
CONDITIONS



**NOTES:**

1. 8 POINTS MAXIMUM PER CERTIFIED INSTRUCTOR PRESENT ON THE FIRING LINE.
2. POINTS SPACED 5' APART WILL ACCOMMODATE ONE SHOOTER AND ONE COACH PER POINT, WHO WILL ALTERNATE POSITIONS ON COMMAND.
3. MARK ALL LINES WITH ATHLETIC FIELD CHALK (LOGS, CURBS, ETC. CAUSE RICOCHETS.)
4. POINT LINES ARE OPTIONAL, BUT WILL HELP TO MINIMIZE CROSS FIRING.

**CAUTION:**  
A SPRING TYPE AIR RIFLE CAN  
FIRE A BB OVER 500 FEET.  
A BB CAN REBOUND / RICOCHET  
OFF ALMOST ANYTHING.  
THINK SAFETY



SITE CONDITIONS WILL  
DETERMINE ACTUAL  
IMPACT ZONE. ZONE  
SHOULD BE FLAGGED.

THIS STANDARD IS SPECIFICALLY FOR  
SPRING-TYPE AIR RIFLES ONLY (MAX. VEL. 350 F.P.S.),  
4.5 MM STEEL AIR GUN SHOT (BB CAL.) ONLY, AND  
PRONE FIRING POSITION ONLY.



ENGINEERING SERVICE  
IRVING TEXAS  
972 580 7826

## CUB SCOUT BB RANGE

APRIL 2009

DESIGN  
**314**  
GUIDELINE